



NEW HAVEN PUBLIC SCHOOLS
New Haven, Connecticut

NEW HAVEN BOARD OF EDUCATION MEETING

Monday, May 10, 2021

INFORMATION ONLY

1. Agreement with Amy Melillo-Ruocco, LSW, to provide 4 days of social and emotional support to students of All Saints Catholic Academy, from May 17, 2021 to June 10, 2021, in an amount not to exceed \$1,500.00.
Funding Source: ESSERF Program **Acct. #**2550-6342-56697-NP23

2. Agreement with UCLA to serve as the evaluator for the Magnet School Assistance Program, from May 10, 2021 to June 30, 2021 in an amount not to exceed \$15,000.00.
Funding Source: Magnet 17-22 Program **Acct.#** 2517-6251-56680-0000

3. Agreement with National SAM Innovation Project, (SAM), to provide a cloud based software of tools and resources, including professional development support for school leaders, from January 4, 2021 to June 30, 2021 in an amount not to exceed \$9,000.00.
Funding Source: Wallace Foundation Grant Program **Acct. #**190-454-00-56694



NEW HAVEN PUBLIC SCHOOLS

Amended
FINANCE AND OPERATIONS MEETINGS
13 Month Calendar for 2021 - 2022

January	04, 2021 19, 2021 (Tuesday)*
February	01, 2021 16, 2021 (Tuesday)*
March	01, 2020 15, 2020
April	05, 2021 19, 2021
May	03, 2021 17, 2021
June	07, 2021 21, 2021
July	06, 2021 (Tuesday)* 19, 2021
August	02, 2021 16, 2021
September	07, 2021 (Tuesday)* 20, 2021
October	04, 2021 18, 2021
November	01, 2021 15, 2021
December	06, 2021
January	03, 2022 18, 2022 (Tuesday)*

(*) Indicates meeting will be on Tuesday due to legal holiday on Monday.

PLEASE NOTE

Finance and Operations meetings are held the first and third Monday of the month at **4:30 p.m.** via Zoom; unless otherwise indicated.



NEW HAVEN PUBLIC SCHOOLS

Amended
GOVERNANCE MEETINGS
13 Month Calendar for 2021 - 2022

January	04, 2021
	19, 2021 (Tuesday)*
February	01, 2021
	16, 2021 (Tuesday)*
March	01, 2020
	15, 2020
April	05, 2021
	19, 2021
May	03, 2021
	17, 2021
June	07, 2021
	21, 2021
July	06, 2021 (Tuesday)*
	19, 2021
August	02, 2021
	16, 2021
September	07, 2021 (Tuesday)*
	20, 2021
October	04, 2021
	18, 2021
November	01, 2021
	15, 2021
December	06, 2021
January	03, 2022
	18, 2022 (Tuesday)*

*Indicates meeting will be on Tuesday due to legal holiday on Monday.

Governance meetings are held the first and third Monday of the month at **5:30 p.m.** via Zoom; unless otherwise indicated.

Testing window will remain open until June 4, 2021

In-Person

ELA & Math

- Grades 3-8
- Smarter Balanced or CT Alternate Assessment (CTAA)

Science

- Grades 5, 8, & 11
- Next Generation Science (NGSS) or CT Alternate Science (CTAA)

Remote

Smarter Balanced ELA & Math

- Grades 3-8

NGSS Science Assessment

- Grades 5, 8, & 11

- Students required to have the secure browser app on their device
- Students required to have camera on during testing

Unfinished Learning

*How do we meet students where they are
and accelerate their learning?*

Ivelise Velazquez, Assistant Superintendent for Curriculum & Instruction

Core Values

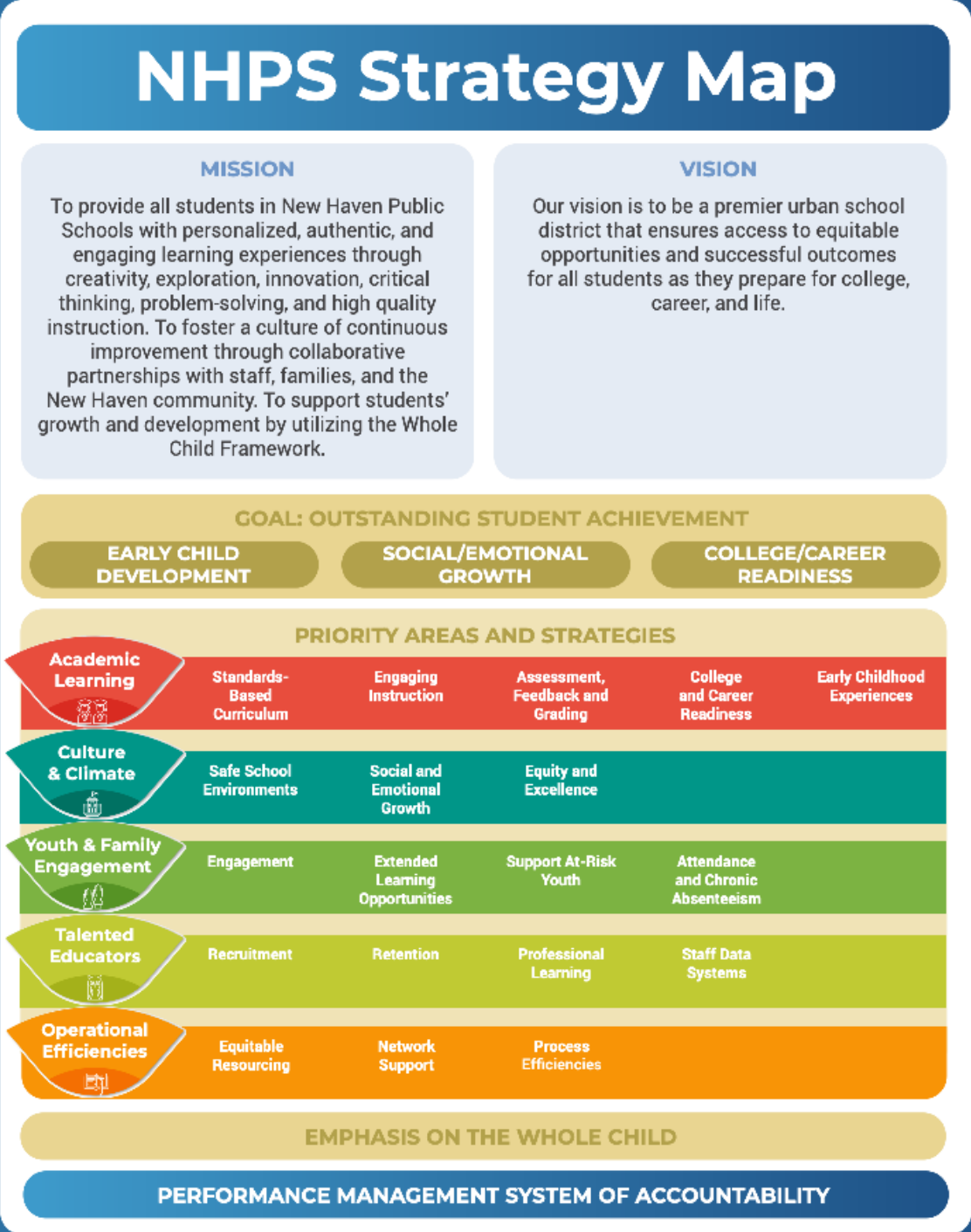
We believe...

1 Equitable opportunities create the foundation necessary for every child to succeed

2 A culture of continuous improvement will ensure that all staff are learners and reflective practitioners

3 High expectations and standards are necessary to prepare students for college and career

4 Collaboration and partnerships with families and the New Haven community will enhance learning and achievement



Academic Office Goals (P1,2,4)

Academic Learning

Standards-based
Curriculum

Engaging Instruction

Grading

College/Career
Ready

Early Childhood

Equity and Excellence

Access to College-
Level Courses

Culturally Relevant
Pedagogy

District Equity
Leadership Team

Policy on Race and
Equity

Professional Learning

PL Opportunities

Standards-based
PD Practices

Multi-modal PD

Set for Success Curriculum Concept Map



Attendance Rates

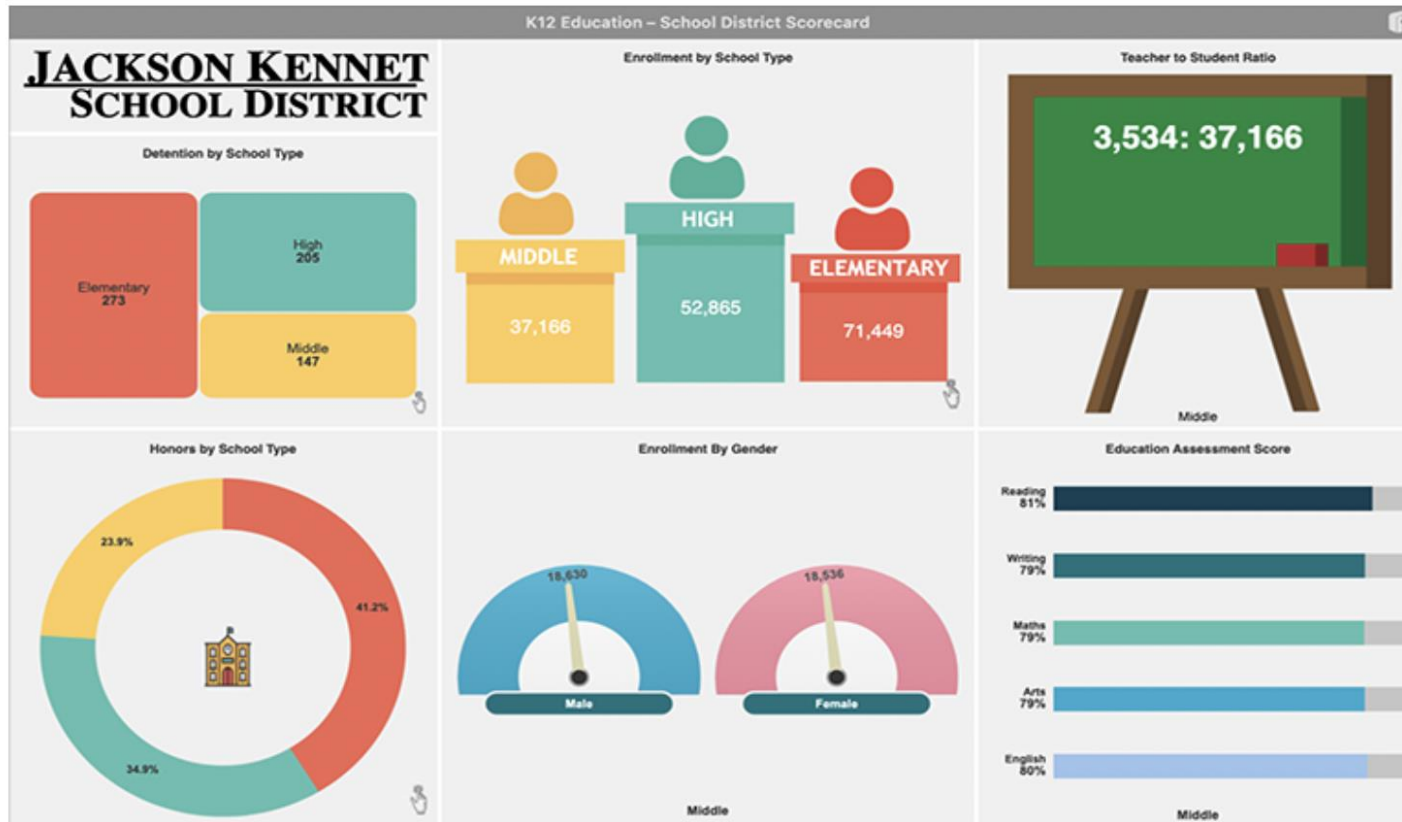
Student Group	2020-21 (January 2021)	2019-20 Attendance Rate	Change
All	85%	93%	-8%
English learners	87%	94%	-7%
Free/Reduced Lunch	83%	92%	-9%
High Needs	83%	92%	-9%
Non-High Needs	93%	95%	-2%
Students with Disabilities	78%	90%	-12%
Students Experiencing Homelessness	74%	88%	-14%
All other races	88%	95%	-7%
Black or African American	82%	92%	-10%
Hispanic/Latino of any race	86%	93%	-7%
White	91%	94%	-3%

Chronic Absences

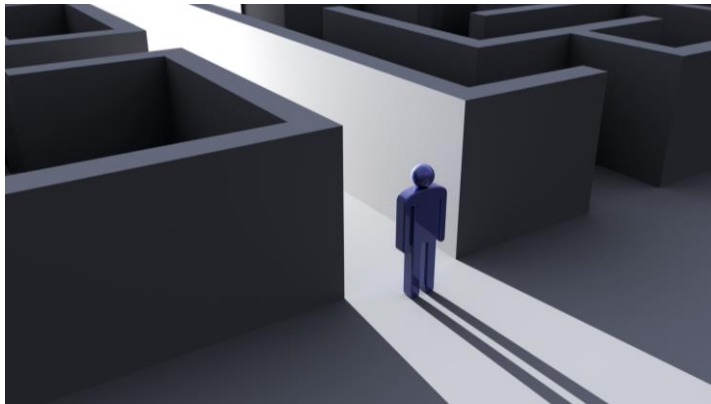
- Oct 6 -43.4%
- Mar 1 –32.1%
- As of March 1, 2021

DISTRICT	Kdg	1st	2nd	3rd	4th	5th	6th	7th	8th	9th	10th	11th	12th	Total
Total # Chronically Absent	400	458	377	387	390	388	425	462	462	716	625	491	449	6030
Total # of Students	1159	1397	1369	1383	1452	1456	1534	1604	1592	1710	1509	1265	1302	18732
Total Average	34.5%	32.7%	27.5%	27.9%	26.8%	26.6%	27.7%	28.8%	29.0%	41.8%	41.4%	38.8%	34.4%	32.1%

Dashboard Project



- Attendance
- Who is chronically absent?
- Latest Assessments
- Behavioral Data
- Grades
- Educator Stats
- Custom Indicators



Step One:
Evaluate what
they know and
are able to do

Portfolio of Knowledge

Brain science tells us to **connect new knowledge to existing schema**...now more than ever remember what works, use an **assets-based approach**.



Portfolio for Every Student

Pick data points
that matter...these
five are important.



Reading Assessment – Running Record in K-3
Text Based Reading Inventory 5-8



Math Inventory OR iReady Assessment



Science Assessment

NGSS IABs or
Practice Test
at 5, 8, & 11



Writing Samples



Authentic Assessments Including Artistic
Expression

Listen to them Read a Book

The best way to assess a student's level of reading is to listen to them read and take a running record....do this for every student.



Math Thinking (not just math facts!)

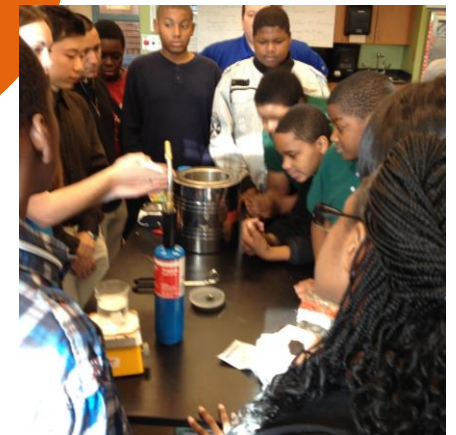
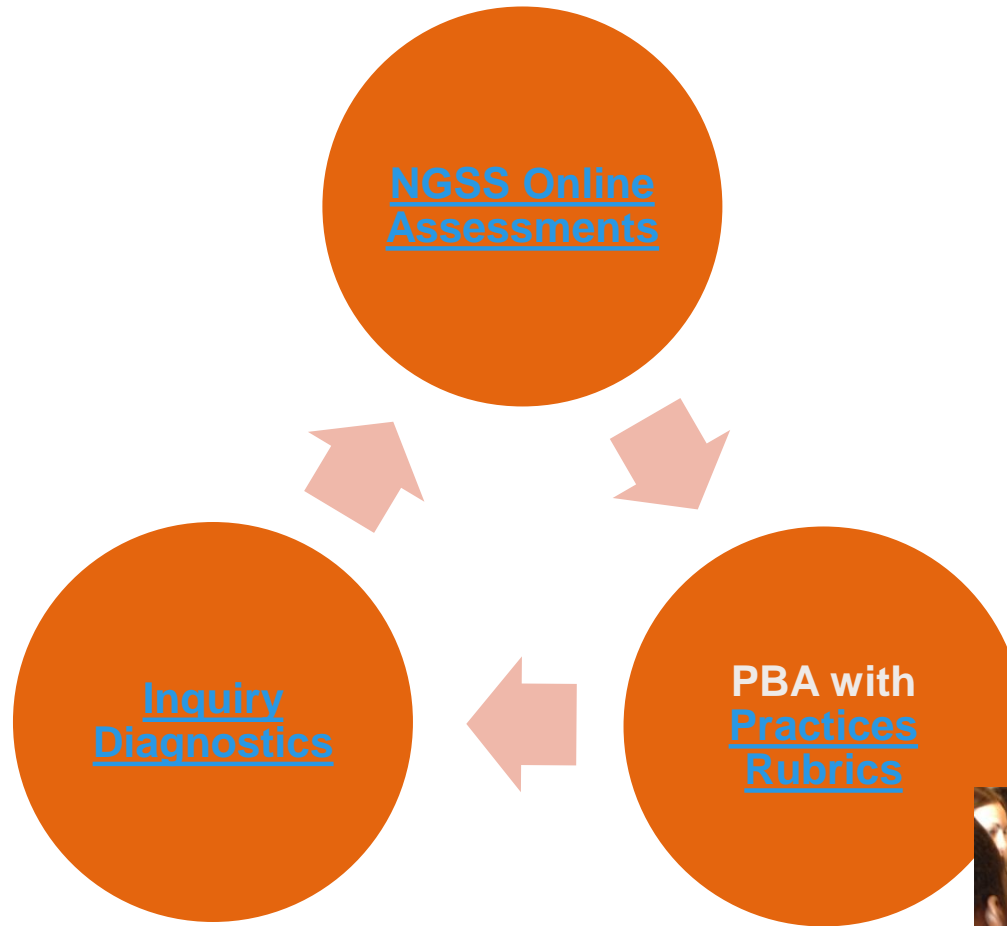
Assesses their
mathematical thinking
using math problems.
Collect several at each
grade level.





Science Info

-standards based
evaluation of
concepts & skills
focusing on science
practices



NGSS Science Interim Assessments & Practice Tests

Reporting

CONNECTICUT STATE DEPARTMENT OF EDUCATION
COMPREHENSIVE ASSESSMENT PROGRAM

Reporting

User: richard.therrien@new-haven.k12.ct.us | Role: DC @ District: New Haven School Dis

Inbox (1) My Settings Help Sign

Dashboard > Performance on Tests

Enter Student ID

Average Score and Performance Distribution, by Assessment: New Haven School District, 2020-2021

Filtered By **School:** All Schools **Test Reasons:** All Test Reasons

Download Student Results Print

Assessment Name	Test Group	Test Grade	Test Reason	Student Count	Average Score	Date Last Taken
Interim Elementary School Physical Science - Waves and Their Application: 4-PS4-2	Interim	5	Unassigned	6	6/13	04/27/2021
Interim Middle School Life Science - Natural Selection and Adaptations 1: LS4-4	Interim	8	Fall	23	7/8	04/26/2021
Interim Middle School Physical Science - Structure and Property of Matter: PS1-4	Interim	8	Interim Test Opportunity 1	29	3/11	04/23/2021
Interim Middle School Physical Science - Forces and Interactions: PS2-2	Interim	8	Interim Test Opportunity 1	45	3/9	04/23/2021
Interim High School Earth and Space Science - Human Sustainability 2: ESS3-3	Interim	11	Interim Test Opportunity 1	36	5/8	04/23/2021
Interim High School Earth and Space Science - Space Systems 1: ESS1-3	Interim	11	Interim Test Opportunity 1	26	3/8	04/23/2021
Interim High School Earth and Space Science - Human Sustainability 1: ESS3-4	Interim	11	Interim Test Opportunity 1	37	3/7	04/23/2021
Interim High School Earth and Space Science - Weather and Climate 1: ESS3-5	Interim	11	Interim Test Opportunity 1	14	3/10	04/23/2021

Collect and Analyze Writing Sample



NHPS Common English Writing Assessment



Spring 2021



- K-8 use the writing sample from the last quarter.
- High Schools will administer and analyze the ELA Common English Writing Assessment Prompts

Other Content Areas

Emphasize what they know rather than what they've lost and use authentic assessments and artistic expression that shows their strengths.

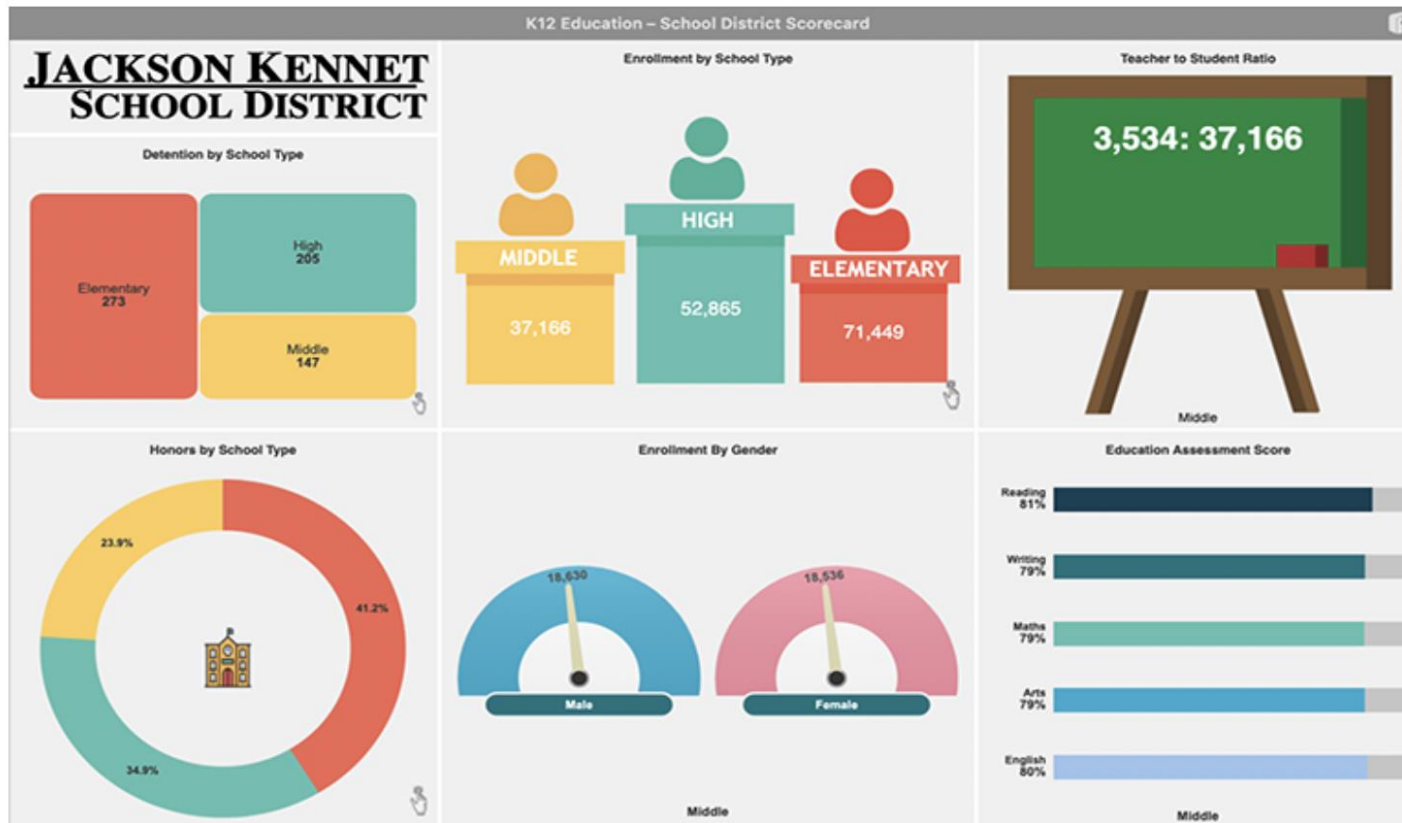


Meeting Students Where They Are

- Share with Colleagues how your school reviews student data weekly to ensure a strong understanding of where your students are and what trajectory is set to guarantee success. Success is not always measured by meeting a benchmark but is also measured by growth toward a benchmark. (5-10 min)
- Revisit the guidance provided by the Literacy Dept. to be continually informed about all students current standings
 - [Reviewing Data.docx](#)
- Visit the Assessment Portal to Review all K-3 current data. Choose one grade to review. Be sure you **use the filters** to define which assessment and groups you are interested in seeing their most recent outcomes.
 - [Assessment Portal K-3 Data](#)
- **Questions to Ponder... for school level reflection**
 - What do you notice about the Winter scores?
 - Based on the review, what will be your school's leadership team's next step?
 - What specific actions will you and your team take to have a different outcome in the Spring?

Step Two: Organize to differentiate!



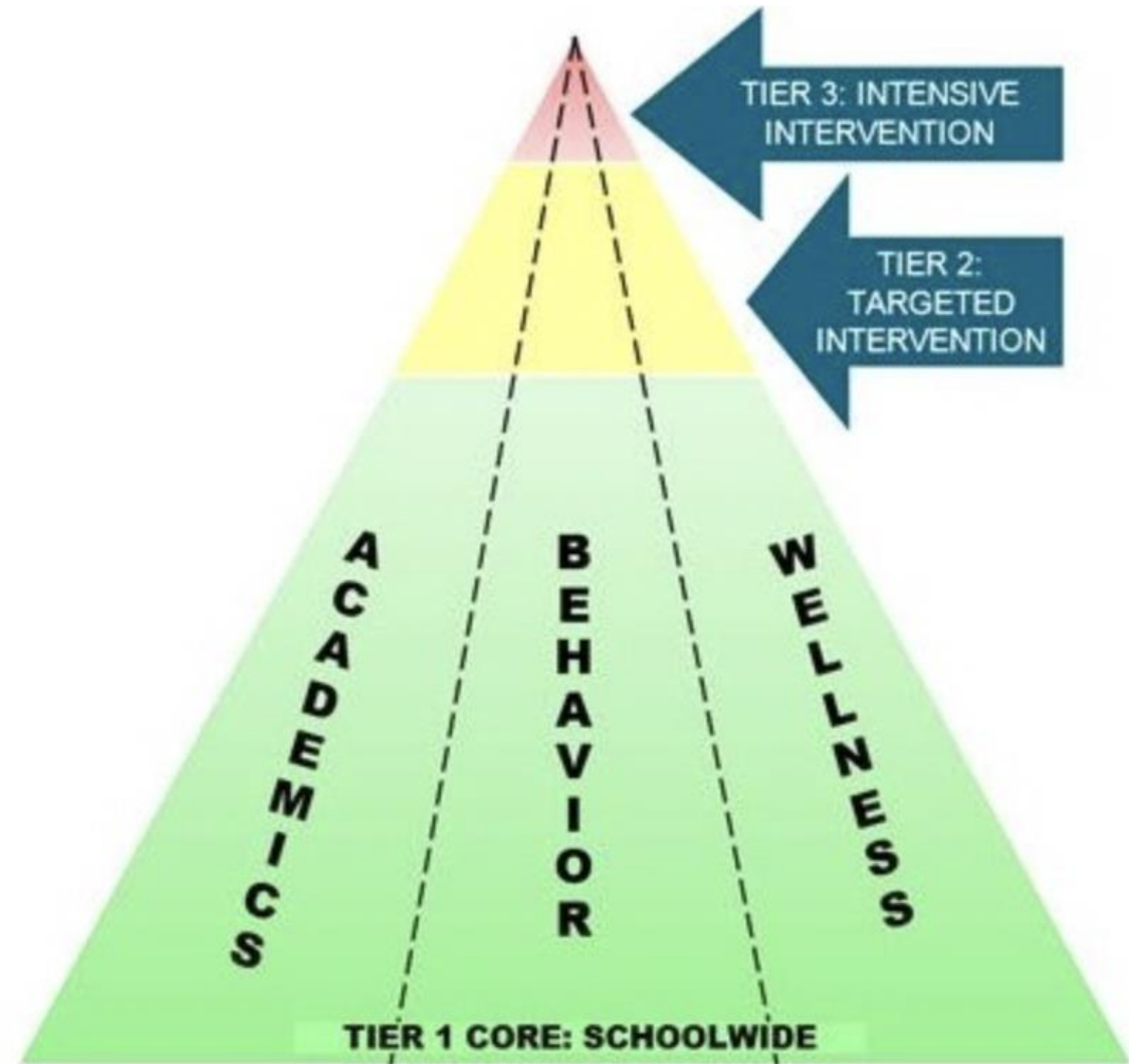


Dashboard Project

- Attendance
- Who is chronically absent?
- Latest Assessments
- Behavioral Data
- Grades
- Educator Stats
- Custom Indicators

Small Groups in Tier One, Core Instruction

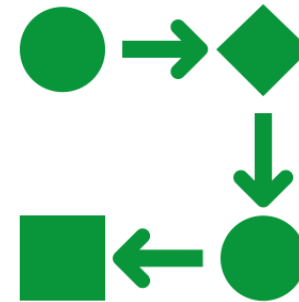
Remember core must
include differentiation!



Create Enrichment / Intervention Blocks



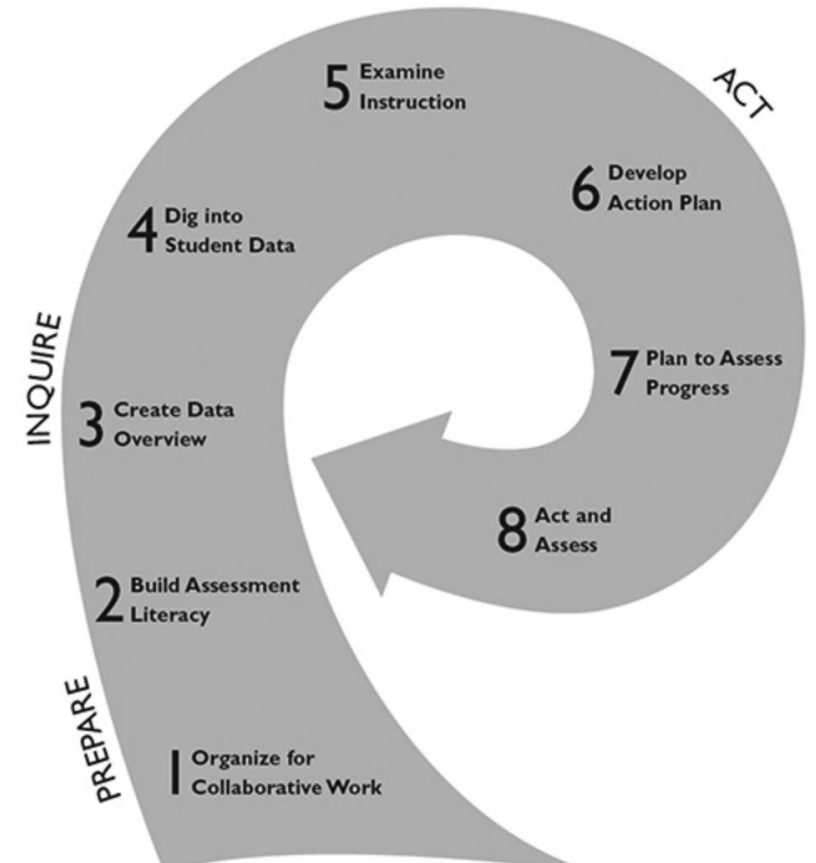
Specify when in your schedule for each grade or grade level band when students will be learning in small homogeneous groupings to deliver tier 2 and tier 3 interventions.



Continue to use technology to practice and reinforce basic facts.

Meet to Analyze Portfolio Data

- Establish a schedule when every grade level will review the FIVE top data points...decide on instructional strategies to respond where the students along the continuum of learning.



Assign Enrichments & Interventions and PROGRESS MONITOR

- In the last quarter, do this informally and formally using district assessments.
- Next year, the district will publish a 6-week cycle progress monitoring calendar to establish when progress monitoring data will be used to assign or exit interventions.



Professional Learning

- Use suggested ELA protocols on [“Meeting Students Where They Are.”](#)
- Ensure teachers know how to access MackinVIA.com for differentiation.
- We will publish a year-long calendar for professional learning starting in August 2021.
- 2021-2022 Pedagogy Academic Office will emphasize:
 - Culturally Relevant Pedagogy: Rigor & High Expectations, Critical Thinking, and Socially-consciousness.
 - Play-based
 - Inquiry
 - Project Based Learning
 - Multi-tiered System of Supports
- Outcomes: Standards-based, Mastery, & Equitable

Step Three: Evaluate & Adjust



Priority Areas Overview

Priority Areas for 2020-2024



Learn.
Achieve.
Rise.

Breakout Rooms

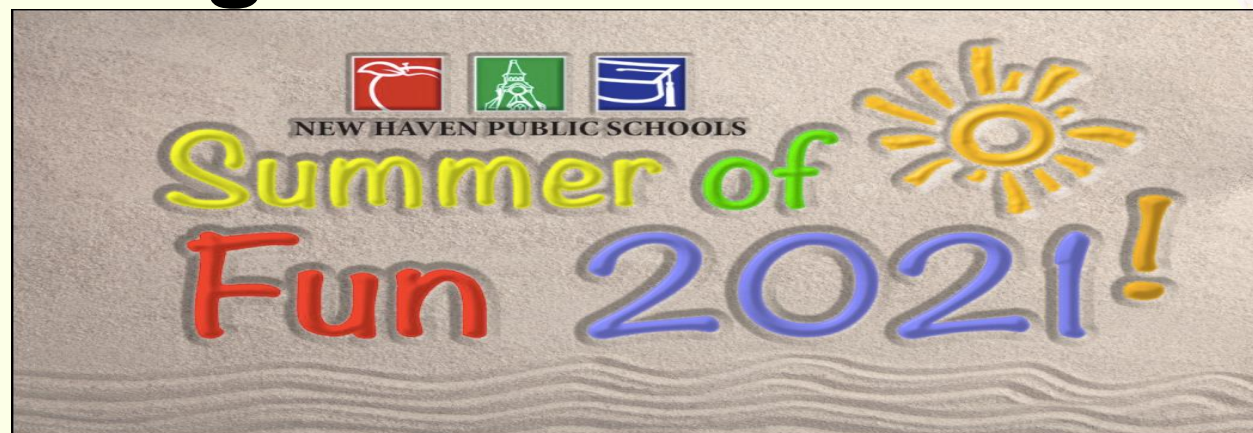
- High Schools will work with Lynn and Marcanthony to discuss the new Writing Assessment.
- K-8 principals and all others will be in small groups with the coaches review BAS data.
- Second Breakout Room: After the presentations, all participants will discuss their Department and School Improvement Plans and add strategies they are using to get at their goals in the Five Priority Areas on to a Padlet.



NEW HAVEN PUBLIC SCHOOLS

May 10, 2021

Supporting Students and Families



ATTEND. CONNECT. ENGAGE.
A.C.E. FOR LEARNING
Call for Support @ 475-220-1734
NHPS OFFICE OF YOUTH, FAMILY & COMMUNITY ENGAGEMENT





- Expanded Summer Camps from 6 school sites to 12 school sites.
- Expanded the time from 8am-12 noon to 8am to 4pm in Collaborating with City Youth and Recreation Department to Support Students during the day
- Expanding collaborations with community partners to bring theme based and creative programming
- Credit Retrieval offered at all of our highschoools
- Career Pathway and Social Justice Summer Camp 6-12gr.



Summer of 
Fun 2021!

Join the Fun!

May 8

Summer of Fun Programs and Resource Fair for Families and Student

June 2

Summer of Fun Community-wide Fitness and Move Challenge -Pre Launch

July 1

Opening Day NHPS Summer of Fun Academic and Enrichment Camps

August 16

NHPS Back to School Celebration and Rally

STAY TUNED
More info will follow....





August Weekends Extravaganza

Provide Student and Family Engagement Opportunities during the weekends..

- **23 Acre Camp**
 - **Hiking**
- **Ropes Course**
 - **Swimming**
 - **ARCHERY**





August Weekends Extravaganza

Provide Student and Family Engagement Opportunities during the weekends..

New Haven Day @

- **Mystic Seaport**
- Norwalk Aquarium**
- Beardsley Zoo**



Support to our most at risk students

- NHPS, in collaboration with ACES and Governor Lamont's "Learner Engagement Attendance Program," is embarking on a community partnership with United Way of Greater New Haven, Ice the Beef, the University of New Haven Tow Youth Justice Institute, and software developer Veoci to address the critical issue of chronically absent students across New Haven schools. Each community partner brings trusted leadership, commitment, and an extensive track record for serving the New Haven community.
- The United Way will serve as NHPS's primary community-based partner to engage and coordinate all participating partners. ICE THE BEEF (ITB), a respected and trusted grassroots door-to-door organization, will provide "boots-on-the ground" activities to help reach students and families. The Tow Youth Justice Institute will provide community/relationship building and restorative framework training in engaging families. Veoci will serve as the data collection platform that tracks quantitative and qualitative data on results, including student attendance and the specific supports implemented to assist students and families. NHPS will engage in a data-sharing agreement with United Way, ITB, and Veoci.
- Restorative coaches funded through ESSER II
- Care coordination supports
- In-depth school supports on restorative practices. At least one person in every school will be trained to serve as a restorative ambassador.
- In-depth training on implementation of the restorative approach for administrators and teachers.

Thank You

